

Are You Ready For Inspection?

SMOKE ALARM STANDARDS:

- New regulation require all smoke detectors must be hard-wired or a sealed 10-year sealed battery.
- A smoke detector must be installed:
 - on each floor.
 - inside and within 21 feet of each bedrooms/sleeping room.
 - Immediate vicinity of the Boiler Room and laundry rooms.
- Inside each bedroom/sleeping room.
- Where a smoke detector installed outside a bedroom is separated from an adjacent living area by a door, a smoke detector must also be installed on the living area side of the door. (Example dining room/living room/playroom with Passover kitchen).
- Including: Community Room, Laundry Room, and Building Hallway.

Electrical- GFCI OR AFCI Outlet:

- Must be installed within 6 feet of a water source. (Sink, Basin, sink, toilet, laundry room, and exterior space/deck).

Water Heater:

- Missing temperature pressure relief pipe.
- The relief discharge pipe terminates greater than 6" or less than 2" from waste receptor flood-level.
- Relief discharge pipe acceptable material Include: CPVC, COPPER, PEX, PEX-AL-HDPE, PEX-AL-PEX, PP, PE-AL-PE.
- **PVC material not acceptable**
- ***Boiler Room must be accessible on Inspection date***

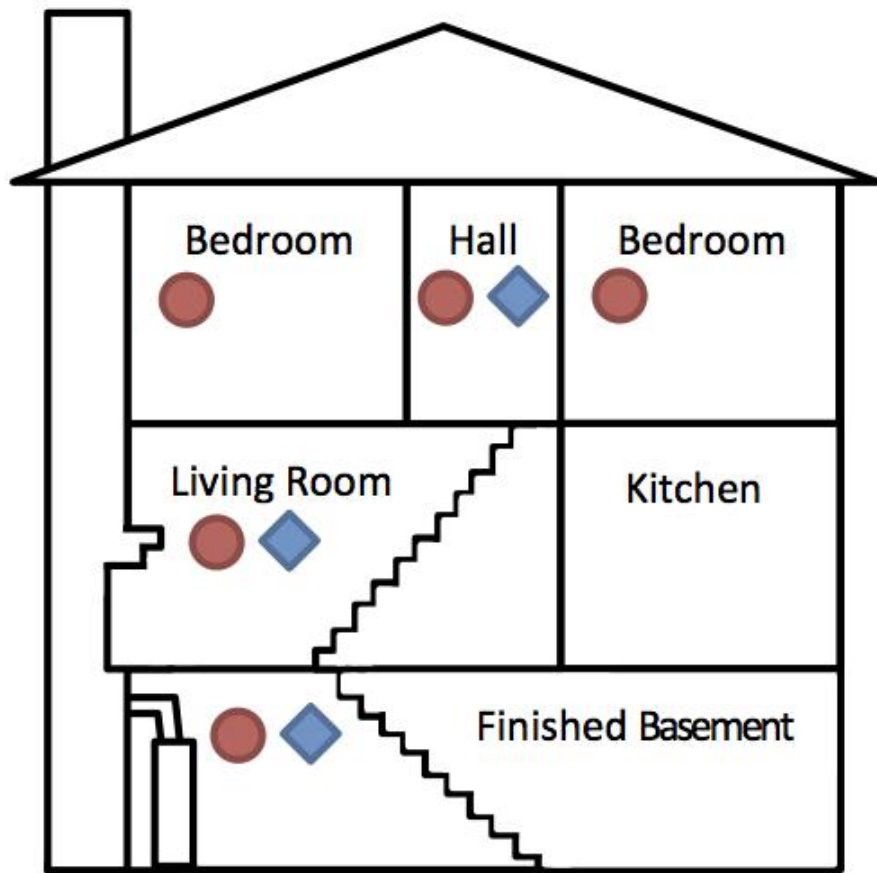
CARBON MONOXIDE ALARM:

If unit contains a fuel-burning appliance (stove, gas dryer or fuel burning fireplace).

- Must be installed in each floor.
- Within the immediate vicinity of each bedroom/sleeping room including room with Passover kitchen.
- Within the immediate vicinity of mechanical room/Boiler.
- Including: Community Room, Laundry Room, Building Hallway.

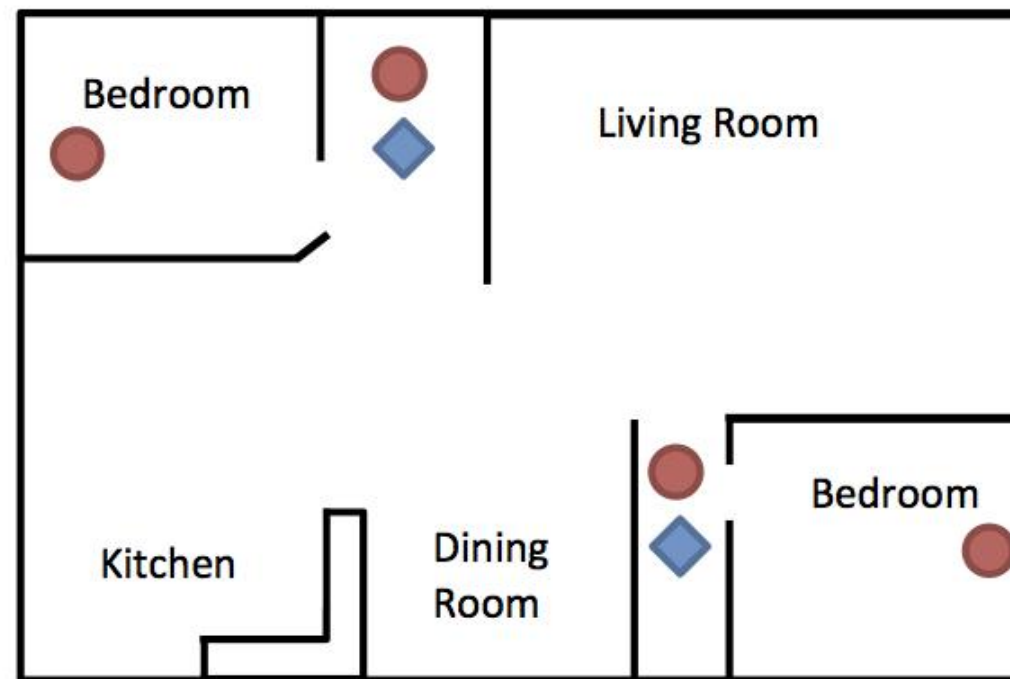
SMOKE ALARM AND CARBON MONOXIDE DETECTOR DEFICIENCIES MUST BE CORRECTED WITHIN 24 HOURS OR HAP PAYMENT WOULD BE ABATED

See Reverse Side



Multi Story Residence

KEY	● Smoke Alarms
	◆ CO Alarms
	● ◆ Both or Combination



Single Story Residence